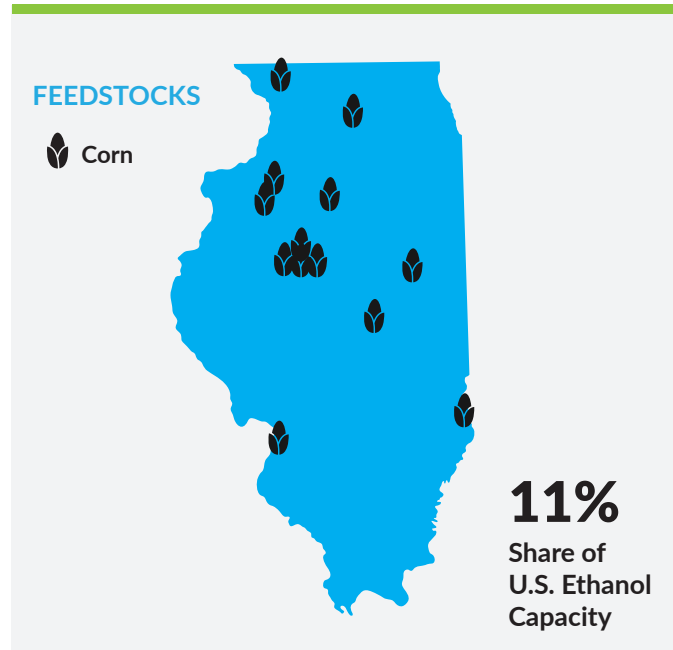


LOCATIONS



ETHANOL FACILITIES

	Congressional District	Capacity (MGY)*
1. Adkins Energy LLC	IL-17	60
2. ADM	IL-13	375
3. Alto Ingredients Pekin ICP Inc.	IL-17	90
4. Alto Ingredients Pekin Inc. (Dry Mill)	IL-17	60
5. Alto Ingredients Pekin Inc. (Wet Mill)	IL-17	100
6. Big River Resources Galva LLC	IL-17	129
7. BioUrja Renewables LLC	IL-17	135
8. CHS Inc. (Annawan)	IL-16	130
9. CHS Inc. (Rochelle)	IL-16	138
10. Crystals Biosciences Inc.	IL-13	55
11. Green Plains Madison LLC	IL-13	90
12. Lincolnland Agri-Energy LLC	IL-12	60
13. Marquis Energy LLC	IL-14	395
14. One Earth Energy LLC	IL-16	150

*Production Capacity (Million Gallons Per Year)

ANNUAL PRODUCTION

2.0 Billion
Gallons of Ethanol

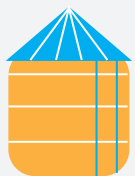
3.9 Million
Tons of Distillers Grains



CORN USE



35,190
Farms Growing Corn



2.3 Billion
Bushels of Annual
Corn Production

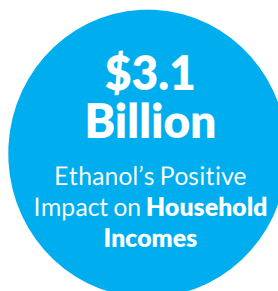
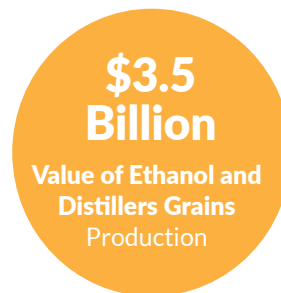


\$9.9 Billion
Value of Corn Production



26%
Corn Used for Ethanol
Production

ECONOMIC IMPACT



FUEL USE

FUEL CONSUMPTION (GALLONS)



4.1 Billion
Gasoline

435 Million
Ethanol

ETHANOL BLENDING BENEFITS

10.5%
Ethanol Blend Rate



\$1.2 Billion
Gasoline Savings

6.0 Million
Metric Tons of Avoided
CO₂ Emissions

STATIONS OFFERING HIGHER BLENDS



496
E85

189
E15