

Trends in the Operational Efficiency of the U.S. Ethanol Industry: 2023 Update

Scott Irwin

Department of Agricultural and Consumer Economics

University of Illinois

February 9, 2024

farmdoc daily (14):28

Recommended citation format: Irwin, S. "Trends in the Operational Efficiency of the U.S. Ethanol Industry: 2023 Update." *farmdoc daily* (14):28, Department of Agricultural and Consumer Economics, University of Illinois at Urbana-Champaign, February 9, 2024.

[Permalink](#)

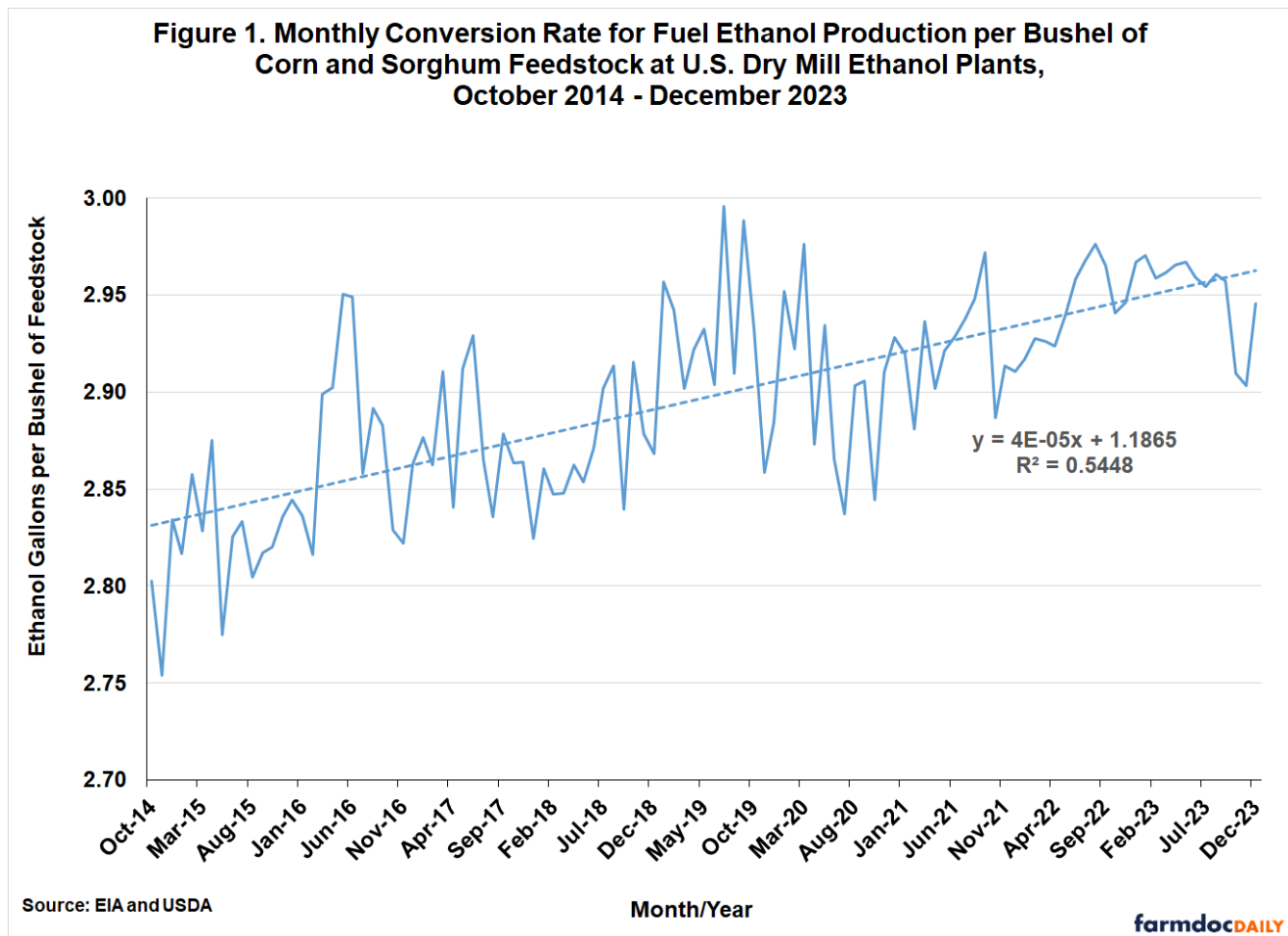
The operational efficiency of any industry is key to long-term profitability, no less so for the U.S. ethanol industry. Fortunately, the USDA began publishing the [Grain Crushings and Co-Products Production report](#) in October 2014 and this important data source allows us to examine trends in key industry efficiency measures, including gallons of ethanol per bushel of corn, pounds of dried distillers grain with solubles (DDGS) per bushel of corn, and pounds of corn oil per bushel of corn. The purpose of this article is to compute these measures at the aggregate level for the U.S. ethanol industry and to examine trends in the measures over time. This is an update of the analysis of operational efficiency published last year (*farmdoc daily*, [March 1, 2023](#)).

Analysis

To begin, it is important to recognize that two basic technologies—dry mill and wet mill—are used in U.S. ethanol production. A basic overview of the two production technologies can be found [here](#). National [ethanol production data from the EIA](#) does not distinguish between dry and wet mill ethanol plants, so the relative importance of the two technologies cannot be estimated from this data. Fortunately, the [Grain Crushings and Co-Products Production report](#) from the USDA includes data on the amount of corn used in ethanol production separately for dry mill and wet mill plants. We can use this data to infer the amount of ethanol produced in the U.S. by the two technologies. Specifically, the USDA data indicate that the amount of corn used by dry mill ethanol plants since October 2014 has ranged from 85 to 93 percent of the combined total for dry and wet mill plants and averaged 91 percent. This suggests that about 91 percent of U.S. ethanol production is from dry mill plants and the remaining 9 percent is from wet mill plants. In the remainder of the analysis in this article we focus on dry mill plants as this is by far the dominant technology used in U.S. ethanol production and it is the technology assumed in previous *farmdoc daily* articles (e.g., [March 22, 2023](#)) that examine the profitability of U.S. ethanol production.

The first operational efficiency measure that we compute is the gallons of ethanol produced per bushel of feedstock processed at dry mill plants. As noted above, [monthly fuel ethanol production from the EIA](#) does not distinguish between dry and wet mill ethanol plants. Consequently, we compute the ethanol conversion rate by dividing monthly ethanol production from the EIA by the bushels of corn and sorghum feedstock used at U.S. dry and wet mill ethanol plants from the USDA's [Grain Crushings and Co-Products Production report](#). We do not expect the use of combined ethanol production at dry and wet mill plants in the numerator to represent a significant limitation because, as shown earlier, wet mill plants represent less than 10 percent of total ethanol production. Note also that both corn and sorghum feedstock are included in the denominator because fuel ethanol production estimates from the EIA do not distinguish between feedstock used to make the ethanol. The amount of sorghum is usually quite small, typically no more than five million bushels per month, and no sorghum use has been reported since July 2020. By comparison, the amount of corn used in ethanol production generally is in the range of 400 to 450 million bushels per month.

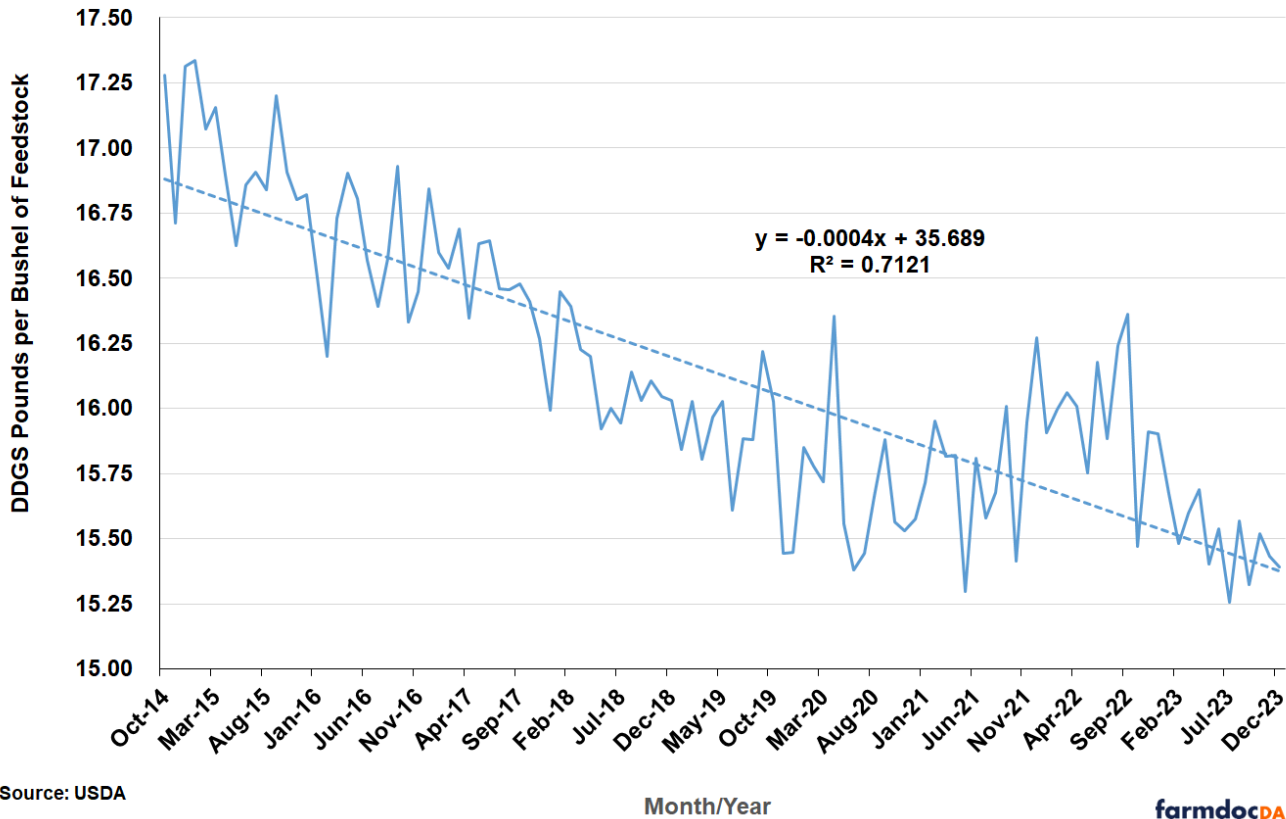
Figure 1 shows the estimated aggregate monthly conversion rate for ethanol per bushel of corn and sorghum feedstock at dry mill plants from October 2014 through December 2023, the latest month for which data is available. There is a clear upward trend over time, with the ethanol conversion rate steadily increasing from around 2.80 in late 2014 to a peak near 3.00 in mid-2019. This represents a about a 9 percent total increase in efficiency, or a gain of roughly 1.8 percent per year. There was a notable dip in the conversion rate during the initial stages of the coronavirus pandemic, but then the rate recovered steadily to a peak of 2.97 in September 2021.



The second operational efficiency measure is the pounds of DDGS produced per bushel of corn and sorghum processed at dry mill plants. Computing the pounds of DDGS produced is complicated by the different types of distillers grains that are produced by dry mill ethanol plants. The [Grain Crushings and Co-Products Production report](#) lists five categories of distillers grain co-products for dry mill plants, so assumptions are needed in order to aggregate the different categories on a dry matter equivalent basis. It is assumed that condensed distillers solubles and distillers dried grains are components of DDGS, so we simply sum these two categories without adjustment and add them to DDGS production. We then adjust distillers wet grains with 65 percent or more moisture and modified distillers wet grains with 40 to 65 percent moisture to an equivalent dry matter for DDGS. Since DDGS has 10 percent moisture as a standard, we multiply the quantity of distillers wet grains with 65 percent or more moisture by $0.45 = 1 - (0.65 - 0.10)$ and modified distillers wet grains with 40 to 65 percent moisture by $0.70 = 1 - (0.40 - 0.10)$. We use conservative assumptions for moisture content in order to avoid under-estimating DDGS production on a dry matter equivalent basis.

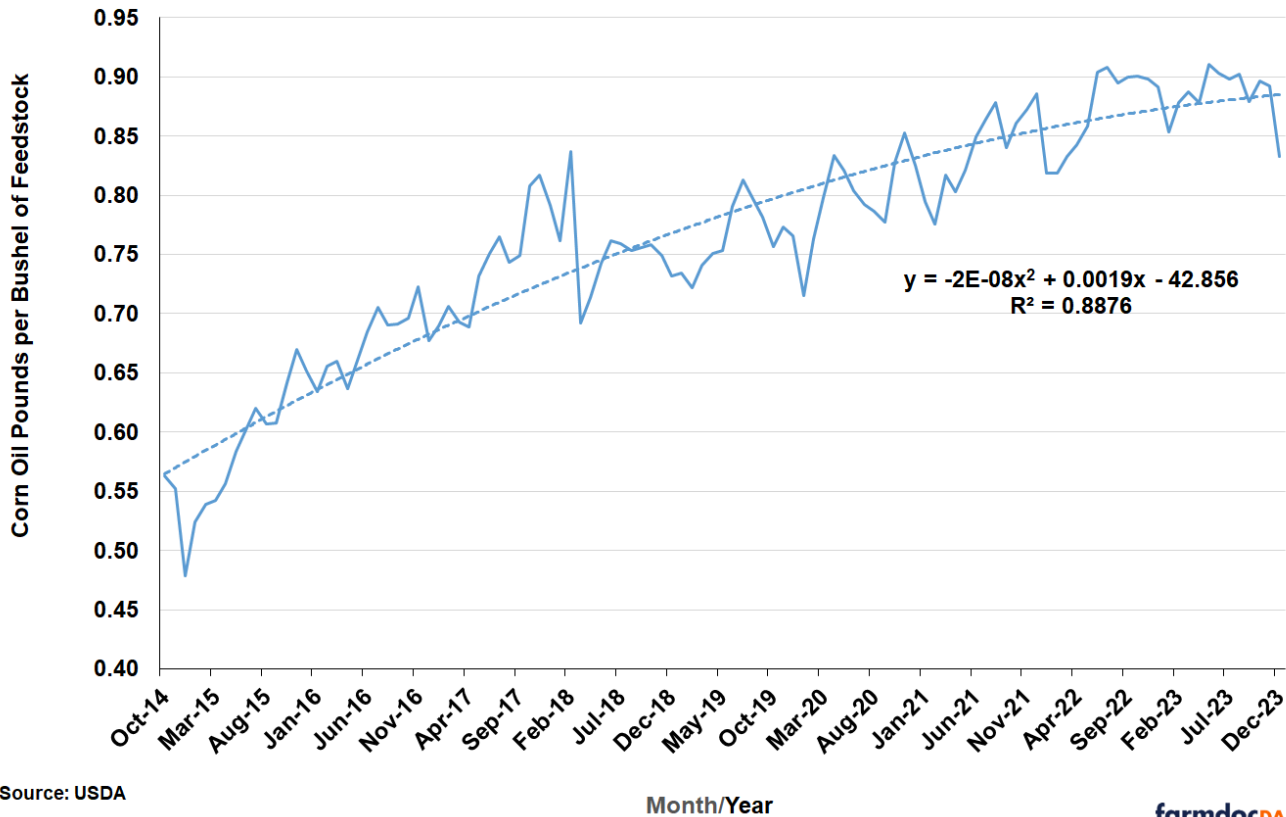
Figure 2 shows the resulting aggregate monthly conversion rate for DDGS per bushel of corn and sorghum feedstock from dry mill ethanol plants over October 2014 through December 2023. Just the opposite of ethanol conversion rates, there is a clear downward trend in DDGS conversion rates. After appearing to bottom out in 2021 and early 2022, the rate continued its downward march in 2023. The DDGS rate started at 17.34 pounds per bushel of corn in October 2014 and then declined to a low of 15.25 pounds in July 2023. This represents a 2.09 pound drop in DDGS production per bushel of corn, or a 12 percent decline. Finally, the linear trend regression shown in Figure 2 explains slightly more than 71 percent of the variation in the DDGS conversion rate.

Figure 2. Monthly Conversion Rate for DDGS Production per Bushel of Corn and Sorghum Feedstock at U.S. Dry Mill Ethanol Plants, October 2014 - December 2023



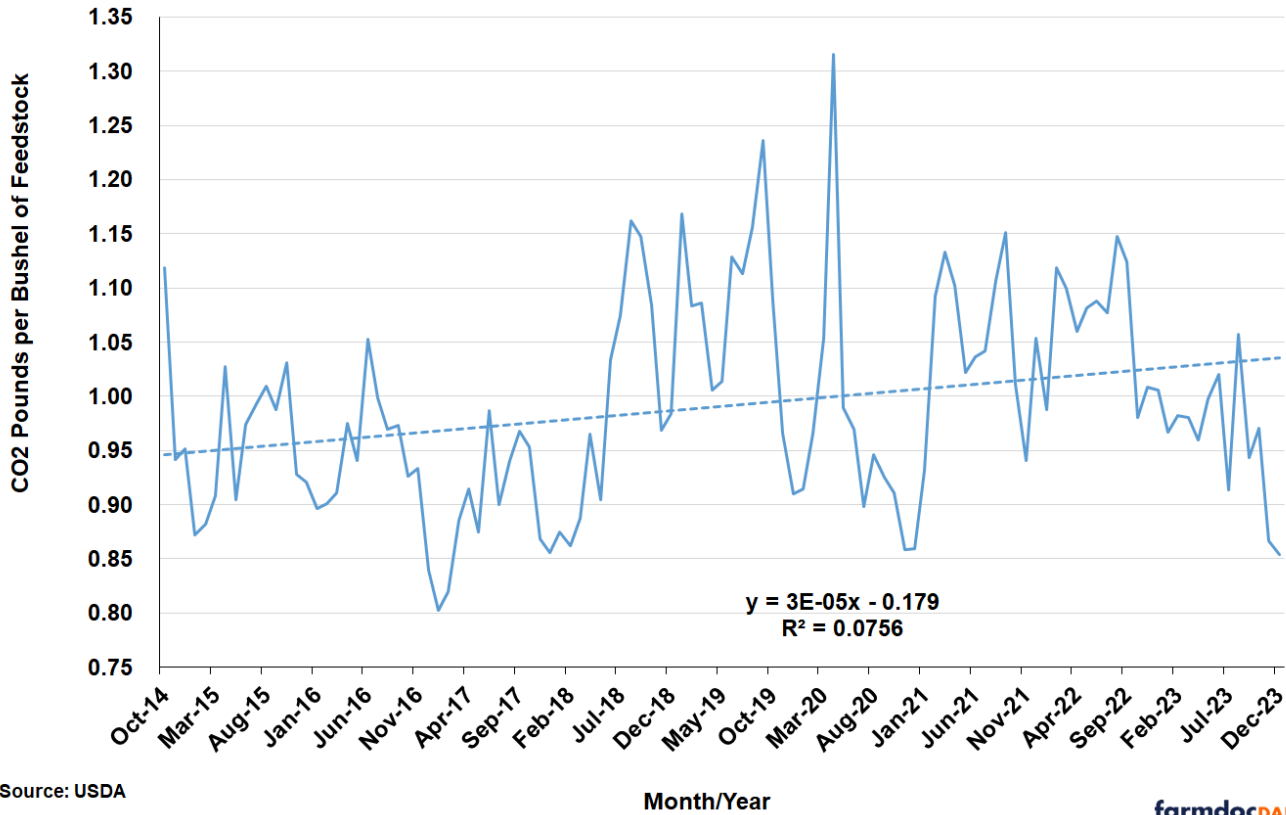
The third measure of operational efficiency is the pounds of corn oil produced per bushel of corn processed at dry mill ethanol plants. This is straightforward to compute as both components are reported directly in the [Grain Crushings and Co-Products Production report](#). Figure 3 shows that the corn oil measure of operational efficiency shows a non-linear trend over the sample period, with a period of very rapid growth from late 2014 through early 2018 and more modest growth thereafter. From the trough in December 2014 to the peak in May 2023 the corn oil conversion rate increased from 0.48 to 0.91 pounds per bushel of corn processed, or an increase of 90 percent.

Figure 3. Monthly Conversion Rate for Corn Oil Production per Bushel of Corn Feedstock at U.S. Dry Mill Ethanol Plants, October 2014 - December 2023



The fourth measure of operational efficiency is the pounds of CO₂ produced per bushel of corn and sorghum processed at dry mill ethanol plants. Total CO₂ production is aggregated across dry and wet mill ethanol plants in the [Grain Crushings and Co-Products Production report](#), so it is not possible to compute CO₂ production separately for dry mill ethanol plants. Using the combined total to represent CO₂ production at dry mill plants is, once again, not expected to be a significant limitation because wet mill plants represent less than 10 percent of total ethanol production. Also, note that a technically more accurate description of the computed measure is the number of pounds of CO₂ sold, since the amount of CO₂ produced in ethanol production dwarfs what is sold into the industrial marketplace (*farmdoc daily*, [March 15, 2023](#)). As shown in Figure 4, the computed CO₂ measure of operational efficiency is characterized by high volatility, with a peak of 1.32 pounds and a low of 0.80 pounds. There is a small upward trend over time, which mainly reflects a jump in the conversion rate that occurred in mid-2018. Nonetheless, the trend in the CO₂ conversion rate over time is small compared to the other rates examine here.

Figure 4. Monthly Conversion Rate for CO2 Production per Bushel of Corn and Sorghum Feedstock at U.S. Dry Mill Ethanol Plants, October 2014 - December 2023



Source: USDA

farmdocDAILY

The picture that emerges from this analysis is one of tradeoffs in operational efficiency. These tradeoffs are most easily seen in Table 1, which presents annual averages for the four measures of operational efficiency for ethanol production at dry mill plants. Note that 2014 is omitted because a full year of data is not available from the USDA. Ethanol producers have clearly increased ethanol and corn oil conversion rates at the expense of DDGS conversion rates. Over the last 10 years, producers were able to net an additional 0.12 gallons of ethanol and 0.29 pounds of corn oil for each bushel of corn processed. This came at a cost of 1.43 pounds less DDGS.

Table 1. Average Annual Conversion Rates for U.S. Dry Mill Ethanol Plants, 2015 - 2023

Conversion Rate										2023/2015
	2015	2016	2017	2018	2019	2020	2021	2022	2023	Change
Ethanol Production per Bushel of Corn and Sorghum Processed (gallons)	2.83	2.87	2.87	2.87	2.93	2.90	2.92	2.94	2.95	0.12
DDGS Production per Bushel of Corn Processed (pounds)	16.95	16.60	16.46	16.12	15.85	15.69	15.78	15.97	15.52	-1.43
Corn Oil Produced per Bushel of Corn Processed (pounds)	0.60	0.68	0.74	0.75	0.76	0.80	0.84	0.87	0.88	0.29
CO2 Production per Bushel of Corn and Sorghm Processed (pounds)	0.95	0.94	0.90	1.00	1.08	0.97	1.05	1.07	0.96	0.01

Notes: Ethanol production is U.S. monthly fuel ethanol production published by the EIA. All other variables are published by the USDA in the Grain Crashings and Co-Products Production report.

farmdocDAILY

Presumably, the operational efficiency changes summarized in Table 1 were a rational response to the available technology for increasing production efficiency and the economic incentives for production of ethanol and corn oil versus DDGS. The impacts of the changes on the revenue stream of ethanol plants was investigated in an earlier *farmdoc daily* article ([March 15, 2023](#)). Annual average prices for ethanol, DDGS, and corn oil at Iowa ethanol plants were collected. The averages were based on weekly observations and used to simulate the revenue streams of a representative dry mill ethanol plant. The results of the analysis showed that the share of total revenue attributable to ethanol sales was virtually unchanged at about 73 percent when comparing 2015 with 2022. The decrease in the DDGS share of revenue was almost exactly offset by the increase in the corn oil share. The growth in the share from corn oil was impressive, increasing from 4.5 percent in 2015 to 7.3 percent in 2022.

While this earlier analysis is interesting, it did not directly measure the economic impact of the operational efficiency tradeoffs. We provide a direct measure with the aid of the revenues shown in Table 2. Revenues in Panel A are based on the product of annual average prices and observed conversion rates (Table 1) for each year. These are the same annual revenue streams estimated in the [March 15, 2023](#) article, except the estimates are updated with 2023. Note that we were unable to locate a price series for industrial CO2, and therefore, omit CO2 from the analysis. Given the small amounts of CO2 sold into the marketplace this is not a major limitation. The row listed for "Total" in Panel A shows the sum of the estimated revenues for ethanol, DDGS, and corn oil. Total revenue is estimated to have increased from \$5.53 per bushel processed in 2015 to \$8.51 in 2023, a net gain of \$2.99.

Table 2. Average Annual Revenue for Ethanol, DDGS, and Corn Oil at a Representative Iowa Dry Mill Ethanol Plant in Dollars per Bushel of Corn Processed, 2015 - 2023

Product	2015	2016	2017	2018	2019	2020	2021	2022	2023	2023/2015 Change
Panel A: Observed Conversion Rates										
Ethanol	4.03	4.15	4.11	3.79	3.94	3.45	6.51	7.01	6.28	2.25
DDGS	1.25	1.00	0.85	1.14	1.08	1.21	1.55	1.92	1.70	0.45
Corn Oil	0.25	0.30	0.27	0.21	0.21	0.34	0.56	0.71	0.54	0.29
Total	5.53	5.44	5.23	5.14	5.24	5.00	8.63	9.64	8.51	2.99
Panel B: Fixed 2015 Conversion Rates										
Ethanol	4.03	4.08	4.04	3.73	3.81	3.36	6.30	6.74	6.02	1.98
DDGS	1.25	1.02	0.88	1.20	1.16	1.30	1.67	2.04	1.85	0.60
Corn Oil	0.25	0.26	0.22	0.17	0.17	0.25	0.40	0.48	0.36	0.11
Total	5.53	5.36	5.14	5.10	5.13	4.92	8.37	9.26	8.23	2.70
Panel C: Difference										
Ethanol	0.00	0.07	0.06	0.06	0.13	0.09	0.21	0.27	0.26	0.26
DDGS	0.00	-0.02	-0.03	-0.06	-0.08	-0.10	-0.12	-0.12	-0.16	-0.16
Corn Oil	0.00	0.04	0.05	0.04	0.05	0.09	0.16	0.22	0.18	0.18
Total	0.00	0.08	0.09	0.04	0.11	0.08	0.26	0.38	0.28	0.28

farmdocDAILY

The revenue estimates in Panel B of Table 2 serve as controls for the analysis of the impact on revenue of the changes in operational efficiency. Specifically, revenues in Panel B are based on the product of annual average prices for each year and 2015 conversion rates (Table 1). In essence, this freezes the operational efficiency of the representative plant at 2015 levels. Total revenue under this alternative assumption is estimated to have increased from \$5.53 per bushel processed in 2015 to \$8.23 in 2023, a net gain of \$2.70.

The key results of the analysis are found Panel C of Table 2, which shows the difference between the revenue streams based on observed conversion rates (Panel A) and the revenue streams based on 2015 conversion rates (Panel B). The difference identifies the gains/losses in revenue due to the changes in operational efficiency over time because prices are the same for both sets of revenue streams. The differences in Panel C show that the operational efficiency gains over the past decade led to an additional \$0.26 of ethanol revenue and \$0.18 of corn oil revenue per bushel of corn processed, or a total gain of \$0.44. This was offset by a drop in DDGS revenue of -\$0.16 per bushel processed. The net was a gain of \$0.28 of revenue per bushel of corn that can be attributed to the

changes in operational efficiency. This represents about a four percent improvement in total revenue, which is economically meaningful.

Implications

Recent trends in the operational efficiency of the U.S. ethanol industry are analyzed in this article. There is a clear upward trend over time in ethanol conversion rates at dry mill plants, which steadily increased from around 2.80 gallons per bushel of corn and sorghum in late 2014 to a peak near 3.00 in mid-2019. This represents about a 9 percent total increase in efficiency, or a gain of roughly 1.8 percent per year. There was a notable dip in the conversion rate during the initial stages of the coronavirus pandemic, but then the rate recovered steadily to a peak of 2.97 in September 2021. Just the opposite of ethanol conversion rates, there is a clear downward trend in dried distillers grains with solubles (DDGS) conversion rates over time. The DDGS rate starts around 17.25 pounds per bushel of corn in 2014 and then declines to a low of 15.25 pounds in July 2023. The most rapid gain in operational efficiency is associated with the corn oil conversion rate. From a low in December 2014 to the peak in May 2023, the corn oil conversion rate increased from 0.48 to 0.91 pounds per bushel of corn processed, or an increase of 90 percent. The picture that emerges from the analysis is one of tradeoffs in operational efficiency of dry mill ethanol plants, with more ethanol and corn oil production coming at the expense of less DDGS. This is estimated to have netted ethanol producers an additional \$0.28 of revenue per bushel of corn processed over the last decade.

References

Irwin, S. "[Further Perspective on Trends in the Operational Efficiency of the U.S. Ethanol Industry.](#)" *farmdoc daily* (13):47, Department of Agricultural and Consumer Economics, University of Illinois at Urbana-Champaign, March 15, 2023.

Irwin, S. "[A Solid Year for Ethanol Production Profits in 2022.](#)" *farmdoc daily* (13):52, Department of Agricultural and Consumer Economics, University of Illinois at Urbana-Champaign, March 22, 2023.

Irwin, S. "[Trends in the Operational Efficiency of the U.S. Ethanol Industry: 2022 Update.](#)" *farmdoc daily* (13):37, Department of Agricultural and Consumer Economics, University of Illinois at Urbana-Champaign, March 1, 2023.

Disclaimer: We request all readers, electronic media and others follow our citation guidelines when re-posting articles from *farmdoc daily*. Guidelines are available [here](#). The *farmdoc daily* website falls under University of Illinois copyright and intellectual property rights. For a detailed statement, please see the University of Illinois Copyright Information and Policies [here](#).

Related Posts